



## YARN BOMBING PROJECT

BANK ART MUSEUM MOREE  
25 FROME STREET  
MOREE, NSW, 2400

## INTRODUCTION

The Yarn bombing project aims to beautify the region, connect the local community, and attract tourism. The pilot program for the Yarn Bombing Project was executed during the #mymoree Street Festival in March 2022.

The pilot tree has demonstrated the durability of yarn bombing and opens the possibility for yarn bombing to further contribute to the Moree CBD. Through community feedback we have seen positive impacts on Moree's tourism. BAMMM will be aiming to continue to grow the project through Moree Shire and aim to connect with surrounding regions.

As the project grows, we plan to have accompanying programs, events and partner projects to encourage community involvement.

'The skill of local artists who created the yarn wrap has been greatly admired by residents and tourists of Moree.' Gig Moses- The Moree Gallery

'The Yarn bomb tree is incredibly beautiful with all its bright colours. It is unbelievable how many people take photos in front of it! We definitely need more.' Sylvia Brodewick - Sylvia's Fabrics



## CONTEXT

The Yarn Bombing Project is a community engagement endeavor that aims to promote social cohesion and create points of interest in Moree's CBD and surrounding village main streets. Yarn bombing is the process of wrapping trees in brightly coloured crochet and knitted scarves or "bombs". The concept has been used worldwide by artists and community groups to brighten parks and streets, bringing a sense of fun to public spaces.

BAMMM's Yarn Bombing Project will see a range of community groups come together to produce the "bombs" and wrap trees in key locations around the Moree Plains Shire.

The project covers the production of the yarn bombs as well as community celebrations to coincide with the installation of the yarn bombs.



## VISION

BAMM's Education Coordinator will lead workshops to teach the yarn bombing technique to our project partners before the community groups take the lead and produce the bombs at their regular meetings. The grant will also provide appropriate materials such as yarn and knitting needles/crochet hooks. To ensure community engagement BAMM's Education Coordinator will lead demonstrations on site in Shire villages and work with community members to identify appropriate tree/s the groups would like to yarn bomb, and then seek permissions from landowners.

Yarn bombing a tree can take between 3-5hrs. During the installation time, we will invite the community to enjoy morning tea and preview the installation process, then celebrate the finished results.



Each tree in the Yarn Bombing Project will include a small plaque that describing who was involved in the project and what the story is behind the specific yarn bomb.

At the conclusion of the project, BAMM will host a celebration as the final yarn bomb is installed in the BAMM garden. The event will include live music, furniture hire and catering. Throughout the event images of all the 'Yarn Bombs' included in the project will be displayed throughout the BAMM gallery space.

## RESEARCH

The pilot program for The Yarn Bombing Project has engaged a large variety of community groups/organisations including Mungindi Community Centre, Moree Women's Shed, Moree Plains Shire Council, Moree TAFE, Moree Tourism and Arts North West.

Donations of over 50 knitted and crocheted granny squares were received from tourists, community groups and local individuals to make the pilot program possible.

On the 29th August, BAMM held a 'Yarn Bomber's' meeting to seek interest in continuing the project and had representatives from the above groups come to express their support and discuss ideas for the project.

The pilot program for the Yarn Bombing Project was executed during the #mymoree Street Festival in March 2022. The pilot tree (based on Heber Street in front of Sylvia's Fabrics) is still intact and vibrant, demonstrating longevity of yarn bombing. We have received only positive feedback about the pilot tree and many requests for further yarn bombing throughout the Moree CBD. We have received positive responses from Moree's tourists as well as locals. BAMM will continue to grow the project through Moree's CBD and into Shire villages with the aim to connect surrounding towns and encourage tourists to travel throughout the shire. During the pilot program we liaised with community members who donated knitted and crocheted items to the yarn bombing project, who have all expressed interest in continuing the project.

A large number of the Moree Shire is in support of producing yarn bombs that celebrates the vibrancy of their villages and significance community. BAMM has completed initial consultation with the Moree Tourism and Moree Plains Shire Council who are in support of the use of the yarn bombing to weaving art style to beautify the region, connect the local community, and attract tourism.

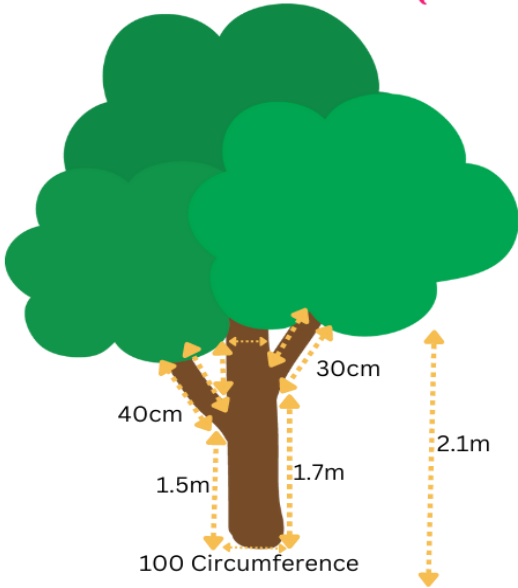


## BENEFITS

The Yarn bombing project not only beautifies the Moree Plains Shire, it also encourages community connection and provides a trail for tourists to visit to ensure neighboring villages in the Shire receive the economic benefit of tourist traffic.

The yarn bombing project encourages social cohesion by connecting villages in the Moree Plains Shire in a shared creative endeavour, creating a positive impact on our community. The rarity of one project being able to engage and involve such a large Shire will reconnect villages that share in celebrating the Yarn Bombing Project.

# How to Yarn Bomb



## Sketch and Measure your target

Draw a rough diagram of your object, then take measurements of each section you're planning to cover, including height, width and/or circumference, and put them on your diagram.

## Creating the granny squares

Regardless of if you knit or crochet, the concept is the same for yarn bombing with granny squares. There is no specific size your granny squares need to be, they can be long, short, wide or they can be an assortment of different shapes and sizes. Get creative with the way you would like to design your yarn bomb. You may want a patchwork style, or create a pattern, or create a uniform look.

**If you are struggling for inspiration look at images of different styles of yarn bombs online.**

## Arranging the granny squares & stitching

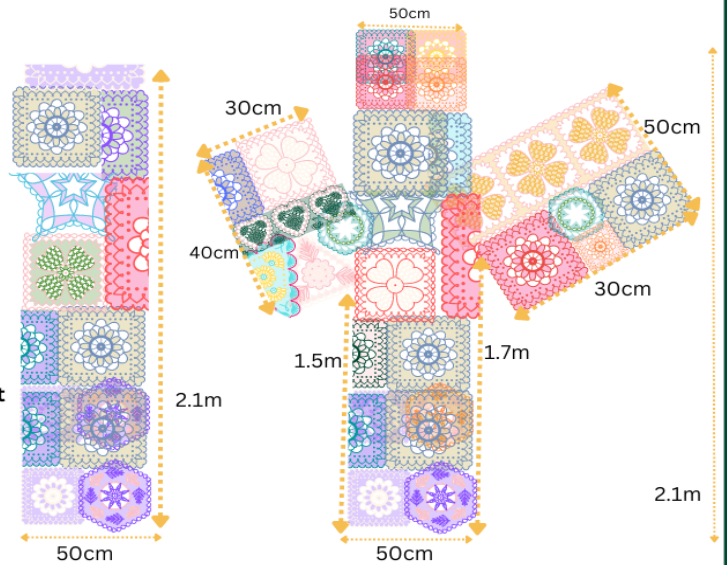
It is better to over estimate then under estimate the size of your yarn bomb. Note that you can fold the excess of the yarn bomb inside the seams, so you are left with a nice fitted wrap around your item.

1. Begin sewing your granny squares together to match the targets width and circumference. Begin from the bottom of the yarn bomb, gathering the squares to match the circumference and sew the first row of squares.

**Ensure all your seams are on the same side as each other, as it will assist with installing the yarn bomb.**

2. Once you have completed the first row, arrange your second row of squares (treat it like a big game of Tetris).

**Take note of where the seams will meet for the install (example below).**



## Installing the Yarn Bomb

1. Beginning at the highest point of your installation, zip tie the yarn bomb to secure it to the object and line up your seams. **Ensure the granny square seams are on the internal side of the yarn bomb before zip tying.**
2. Zip tie all your seams together beginning for the top of you installation, and work your way down. This will assist with sewing the seams and reduce the tension on the yarn.
3. Once you have completed zip tying the seams, you can begin sewing the seams together.



*You have now successfully yarn bombed your target!*



# How you can get involved in The Yarn Bombing Project

BAMM's Yarn Bombing Project will see a range of community groups come together to produce the "bombs" and wrap trees in key locations around the Moree Plains Shire.

The project covers the production of the yarn bombs as well as community celebrations to coincide with the installation of the yarn bombs.

BAMM's Education Coordinator will lead workshops to teach the yarn bombing technique to our project partners before the community groups take the lead and produce the bombs at their regular meetings. BAMM will lead demonstrations on site in Shire villages and work with community members to identify appropriate tree/s the groups would like to yarn bomb, and then seek permissions from landowners.

At the conclusion of the project, BAMM will host a celebration as the final yarn bomb is installed in the BAMM garden. The event will include live music, furniture hire and catering. Throughout the event images of all the 'Yarn Bombs' included in the project will be displayed throughout the BAMM gallery space.

## Organisations, Individuals & Community groups

- 🌸 Knit granny squares
- 🌸 Crochet granny squares
- 🌸 Attend install events
- 🌸 Help assemble yarn bombs
- 🌸 Join a yarning group
- 🌸 Attend yarn bombers meetings
- 🌸 Host a yarning group
- 🌸 Collect granny squares
- 🌸 Encourage your workplace to get involved
- 🌸 Register your interest by signing up via the BAMM website

## IMPLEMENTATION

BAMM has started the process of seeking permissions from council to confirm the trees/objects that reside on council property. Currently we have not identified any trees/objects that reside on private property, but we assume there will be some suggested as the project grows.

The initial trees/objects we are looking at are in Moree CBD and some of the surrounding parks and gardens, BAMM's Education Coordinator will then be travelling through some of the surrounding villages in the Shire to teach how to yarn bomb and discuss which objects/trees they would like to feature in their villages. This will require some additional permissions (if the objects/trees are on council or private property), as the village communities will choose a prominent tree/object which will beautify their village and attract tourism.

In the meantime, those participating will be able to utilise this time to prepare a design, attend yarn bombing meetings, join a yarning group and begin preparing their granny squares. This will allow those participating to have enough time to prepare before install. BAMM will be hosting two yarning groups per week in the BAMM studio, one on a Monday at 10am and the second on a Saturday at 1pm. This space will be used for planning, relaxing, yarning and socialising.

Once permissions are granted we will assign the approved objects/trees to individuals, groups, and organisations. Where groups will be able to begin assembling their knitted items in accordance with the subject they will be yarn bombing. BAMM's Education Coordinator will be available to offer guidance and consultation on the yarn bombing method.

Dependant on budget and the number of tree's accepted for the yarn bombing project, BAMM will host a minimum of 5 install events at various locations. This will happen in accordance with the yarn bombers who have created the knitted wraps for each tree.

### TASK / PROCESS

JAN

FEB

MAR

APR

MAY

JUN

JUL

AUG

SEP

OCT

NOV

DEC

Seek expressions of interest from the community and organisations.

Seek permissions from property owners

Collect granny squares and knitted items

Yarning groups

Teaching Yarn Bombing to the community

Assign trees/objects to community members groups

Yarn Bombing install events

Installing Yarn Bombs

Closing event and yarn bombing BAMM garden

